

PhotoDazzle^{1.3.5} *Beautiful*



a Quick Tutorial

THEKEPTPROMISE
unique simplicity

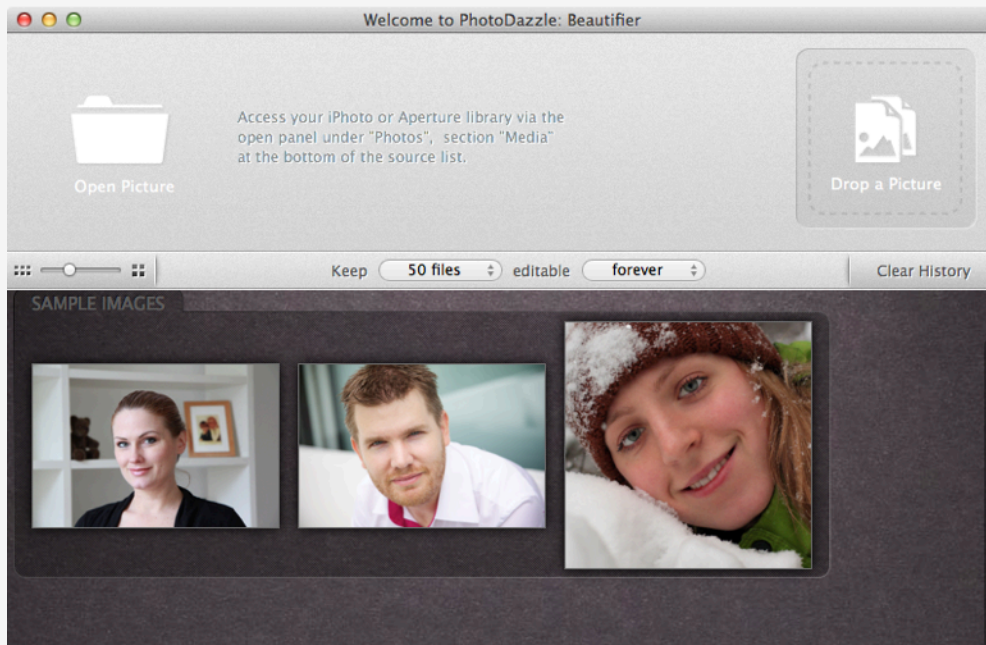


First steps

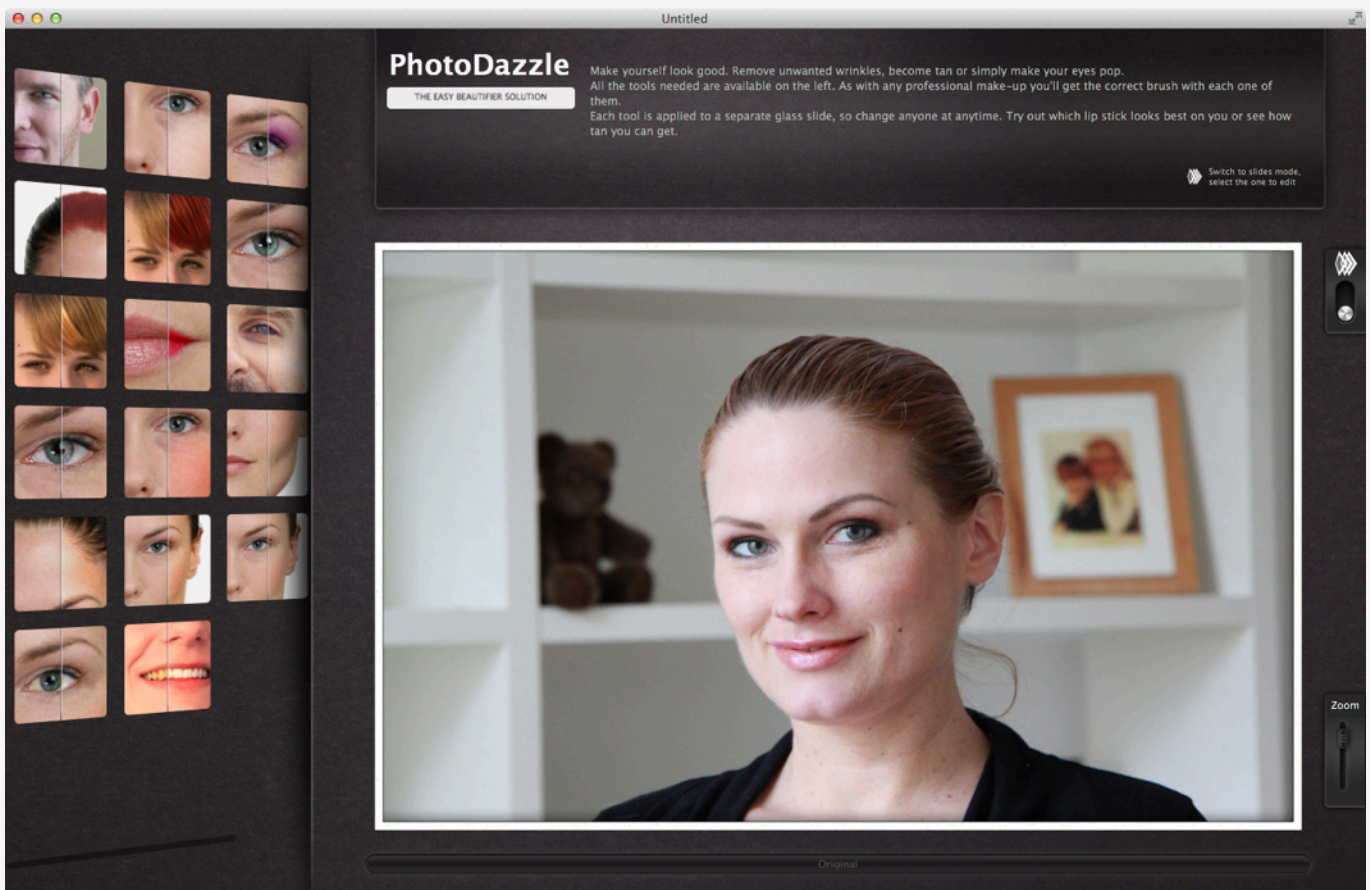
1

At first launch, PhotoDazzle welcome screen appears. Start using our sample image by clicking on the one of your choice or load our own following the on screen instructions.

Welcome screen with sample images



Your selected photo now opens into the main PhotoDazzle interface



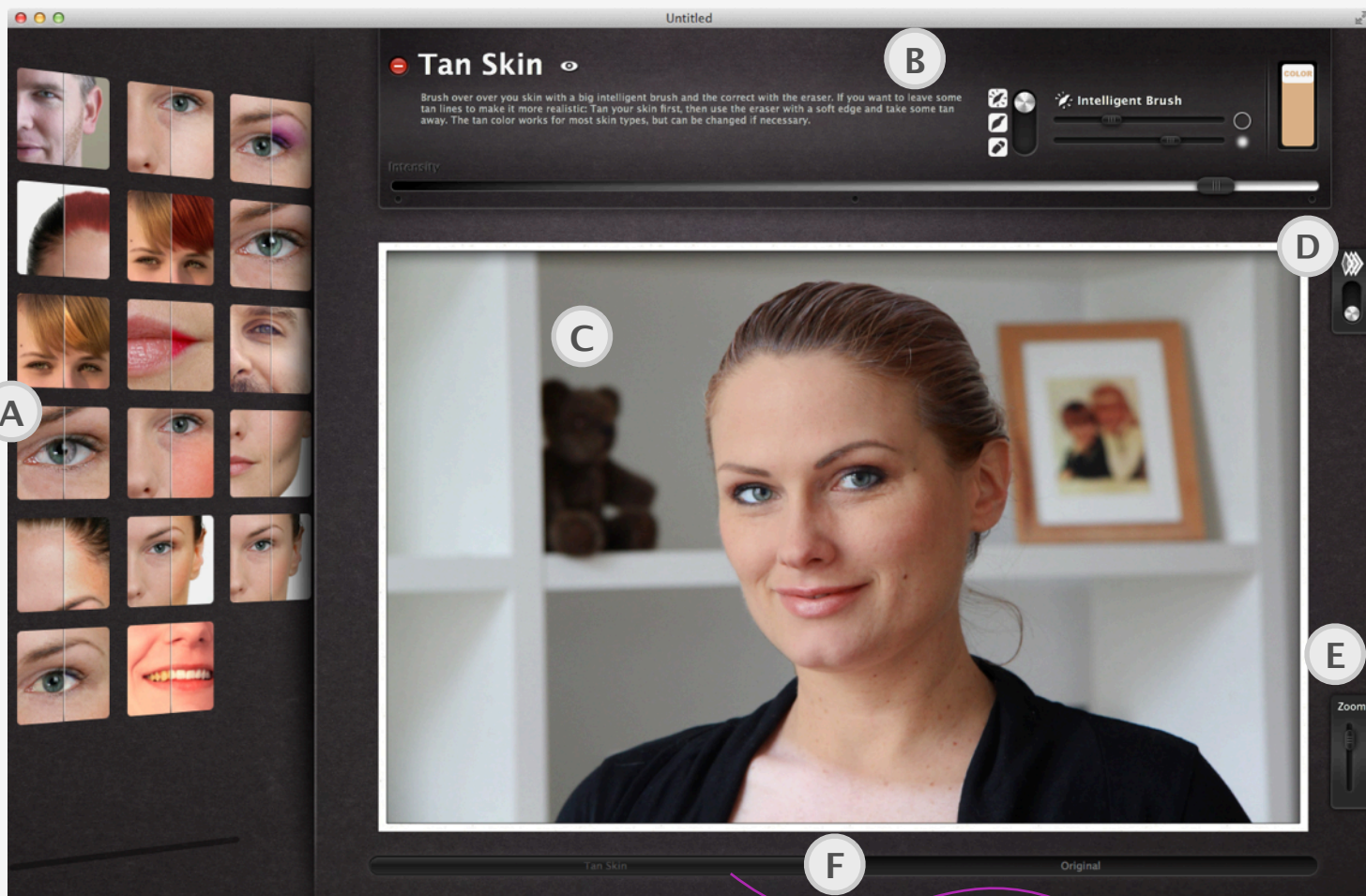
2

Applying effects

Browse the effects list (A) and select the one you want to use/apply on. When you hover over an effect, you can see a preview example of the result you can get. For each effect, the main settings area (B) will update with a description.

Let's start using the tan skin! Once found, click once to apply the effect.

- A• Effect list
- B• Main settings area
- C• Preview (your photo)
- D• 3D layers view switch
- E• Photo zoom slider
- F• Layer navigation bar



The mouse cursor over the photo is now displaying a circle brush. With the "Intelligent brush" selected by default, you can easily start tanning the skin.

To be more precise, you can either zoom (E) or choose a different brush size from the (B) area — usually choose a smaller size when you increase the zoom.

You can use the navigation bar to jump to any applied affect.

Note that gestures are available if you're using a Magic Trackpad:

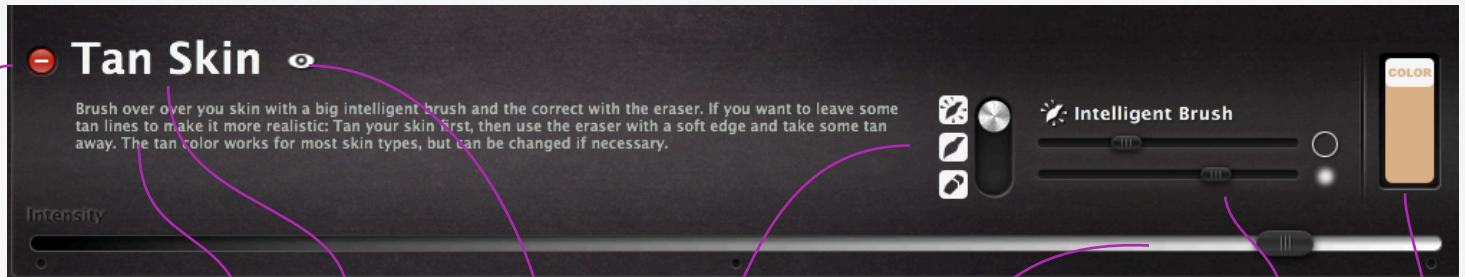
- Two fingers pinch to zoom
- Cmd + scroll up/down to increase/decrease the brush size
- Cmd + scroll left/right to increase/decrease the brush hardness

While painting, you can hold "alt" key to temporarily switch to eraser mode, helping you to be even more efficient!

Settings area

3

Top setting area for the “Tan Skin” effect:



Remove the effect

Effect name

Instant show/hide

Description

Available tools - selected by click:

- Intelligent Brush (will help you applying the effect with auto-edge detection — and more — features)
- Click brush for iris selection (not available for this effect)
- Classic Brush
- Eraser (will unapply the effect where you erase)

Tools can have two settings like a size and a smooth slider

Some effects like “Lipstick” can use a custom color

Set the intensity slider to decide how much you want the effect to be applied on your photo

Try out different intensity settings or a different skin color. To make a quick before/after comparison just hover over the eye icon next to the effect name.

THEKEPTPROMISE
unique simplicity

